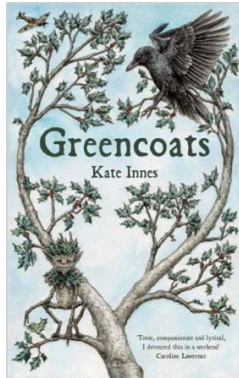


## Traditions, Superstitions and Folklore in the Woods!

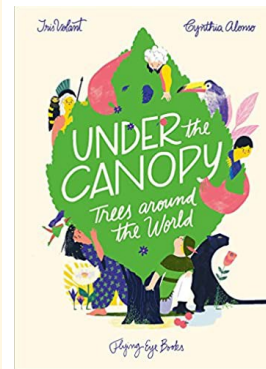
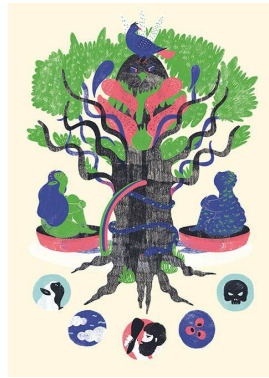
Date:



Sluggish and long-lived, this medicinally evergreen can grow to 20 metres in height and live up to 1000 years old. Its dark green leaves are poisonous and in early spring, small yellow flowers peek out.

*The YEW Tree*

The World Tree of Norse mythology, Yggdrasil, is believed to have been a green yew tree. One of its roots sprang from the very centre of the earth and as it rose up, its branches reached out over the whole universe, connecting the nine worlds. On its summit perched an all-seeing eagle, with a hawk sitting between his eyes. A squirrel continually carried news to the eagle, while serpents coiled around the root trunk – working to destroy him. The tree was the symbol of all knowledge and wisdom, seeking to explain the fact that hold the universe together.



	Pupil	Teacher
My writing is correctly punctuated throughout.		
I have used prepositions (before, during, in, because of).		
I have used paragraphs as a way to organise my writing.		
I have used some descriptive language.		